

EC0-1821

ATX Motherboard

EC0-1821 motherboard adopts standard ATX specification, Intel C246 platform and provided with Intel 8/9th Gen processors; it supports PCI+PCIE expansion combination, multiple serial ports, multiple USB ports and SATA RAID 0, 1, 5, 10. The product can be widely used in industrial automation, Internet of Things, self-service terminal, petrochemical engineering, safety monitoring, intelligent transportation, environmental protection, communication and other fields.



Product Features



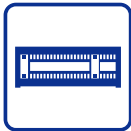
Supports Intel 8/9th Gen processors



Supports 4 × memory slot

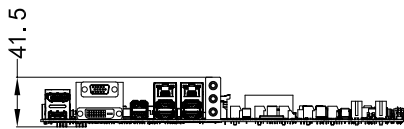
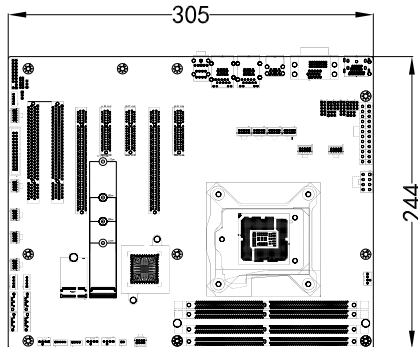


12 × USB port
6 × serial port



2 × PCI
5 × PCIe expansion

Product Dimensions Drawing



(Please refer to the user manual to check detailed specifications and dimensions) (unit: MM)

Product Specifications

Item	Description
Processor	Supports Intel LGA 1151 pin: 8/9th Gen processors, Xeon E-21xx/E-22xx series processors
Chipset	C246
Memory	4 x DDR4 DIMM memory slot, a single memory supporting 32GB, the four supporting up to 128GB
Display Ports	Any three display ports among VGA, HDMI, DVI-D and DP
Audio	Ports Supports MIC-IN/LINE-IN/LINE-OUT
LAN	2 × Gigabit LAN port, LAN1 supports LAN wakeup
Memory	4 × SATA3.0, supporting RAID 0, 1, 5, 10
I/O Port	6 × serial port, COM1 and COM2 support RS-232/RS-422/RS-485 mode selection 6 × USB 2.0 port, 4 × USB3.1 GEN2 port (10Gb/s), 2 × USB3.1 GEN1 port (5Gb/s) 1 × PS/2 port 1 × 8-channel digital I/O port 1 × TPM port
Bus Expansion	2 × PCI, 3 × PCIe x4 2 × PCIe x16 (when PCIe5 slot is occupied, the two PCIe slots adopts PCIe8 speed by default) 1 × M.2 KEY M port (PCIe X4, supporting sizes 2242/2260/2280/22110) 1 × M.2 KEY E port (PCIe X1, supporting size 2230)
Power Supply	ATX power supply
Working Environment	-10°C~60°C
Storage Environment	-20°C~80°C
Constant Damp Heat	40°C 95%RH, non-condensing
Overall Dimensions	305 mm (L) × 244 mm (W)
Operating System	WIN10、Linux

Ordering Information

Part No.	Model	Description
0030-023211	EC0-1821-I210	ATX motherboard / C246 chipset / supports Intel 8/9th Gen processors / provides 4 × DDR4 DIMM, supporting expansion up to 128 GB / any three display ports among four (DP, HDMI, VGA and DVI-D) / 4 × SATA3.0, supporting RAID 0,1, 5, 10 / 2 × Gigabit LAN port / 12 × USB / 6 × COM port / 1 group of audio ports / 1 × 8-channel GPIO / 1 × TPM port / 1 × PS2 motherboard built-in pin / expansion ports: 2 × PCI, 3 × PCIe x4, 2 × PCIe x16 / 1 × M.2 KEY M port (PCIe X4, supporting sizes 2242/2260/2280/22110), 1 × M.2 KEY E port (PCIe X1, supporting size 2230) Note: When the two PCIe x16 slots are occupied at same time, the speed will be reduced to the speed of PCIe x8

Note: EVOC Intelligent reserves the right to final interpretation of product specifications and ordering information etc.