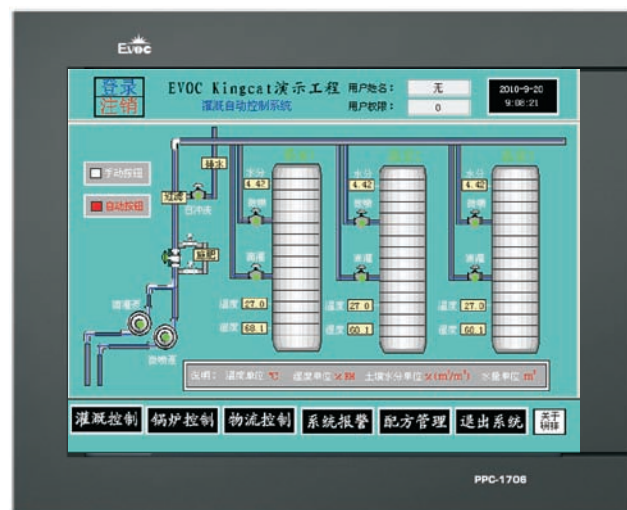
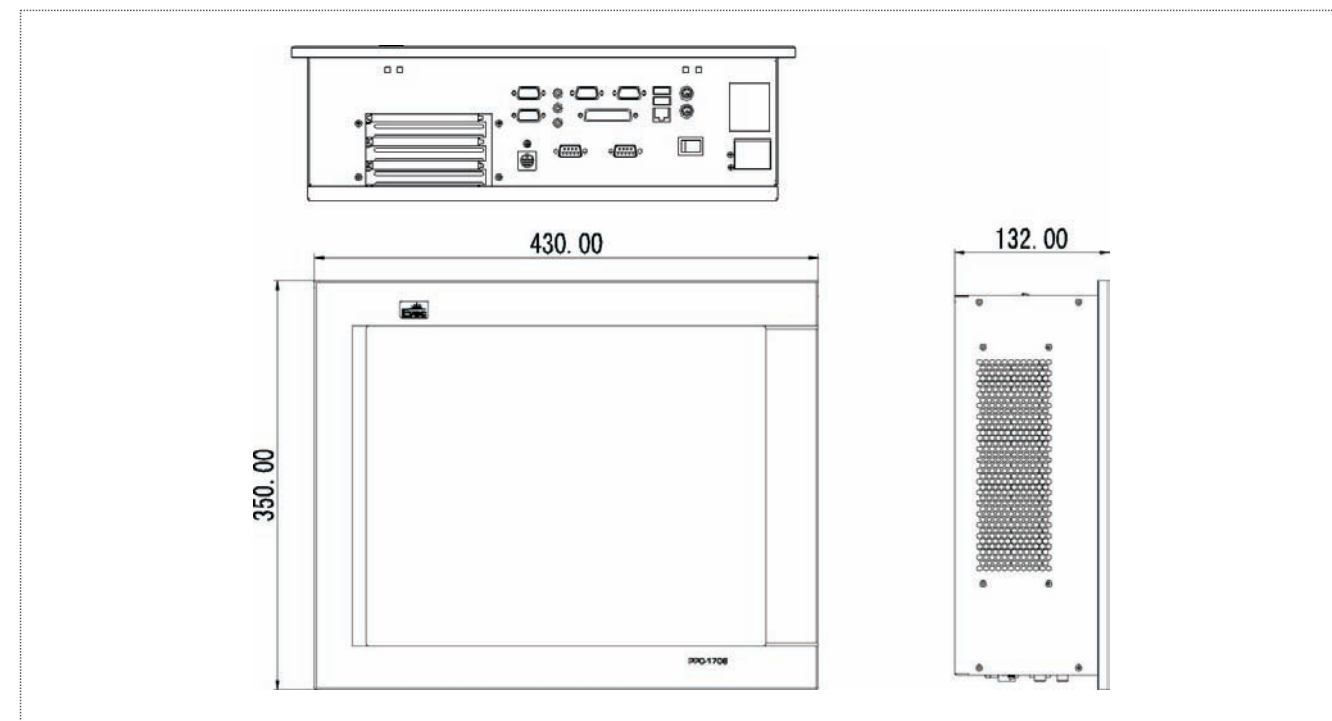


# PPC-1706

17" LCD Panel PC with touchscreen/LAN/Audio/2USB/6COM



## Dimensions



1

PICMG



2

EPIC/EBX /xTX

## Specifications

### Display Features

Display Screen	17" high-brightness LCD
Display Chipset	integrates AMD M690E chipset
Dual Display	support VGA+LVDS dual-display
Resolution	1280 x 1024
Brightness	300cd/m2
Contrast ratio	800 : 1
Backlight MTBF	50000 hrs
Touch Screen	Optional touch screen(RS-232 interface)

### System

SBC Model	ETX-1841LDNA
Processor	AMD Mobile Sempron 2100+ Dual-core CPU
Chipset	AMD M690E+SB600
Memory	1 x 200-pin SO-DIMM slot, up to 2GB
Hardware Monitor	Software programmable supports 1~255 sec./min. timer system reset/interrupt

Watchdog Timer	Two PCI expansion slots; one ISA expansion slot;
Expansion Interface	1 x 160GB hard disk, 1 x Compact Flash Socket Type I/II
Storage	

### Ethernet

Chipset	Realtek RTL8139DL
Speed	1 x 10/100Mbps
Connector	1 x RJ45

## Features

- 17" high-brightness LCD, touch screen (optional)
- AMD Mobile Sempron 2100+ Dual-core CPU
- 1 x 200-pin SO-DIMM slot, up to 2GB
- Supports 2 x USB2.0, 6 x COM, 1 x LPT, 1 x LAN, 1 x Audio, 1 x CF, 2 x PS/2 port (KB/MS)

## I/O Interface

USB	2 x USB 2.0 port
Serial Port	6 x RS-232 COM, COM2 can be RS-232/RS-422/RS-485 port
Parallel Port	1 x LPT
KB/MS	Two PS/2 interfaces
Audio	AC'97, available interface of Speaker-out, Line-in and Mic-in

## Mechanical and Environmental

Dimensions	430.00mm (W) x 350.00mm (H) x 132.00mm (L)
Weight	11.50/14.30Kg
IP Level (front panel)	IP65 (optional)
Reliability	MTBF ≥ 50000 h; MTTR ≤ 0.5h
Safety	GB4943
Operating Temperature	0°C~60°C
Storage Temperature	-20°C~70°C
Operating Humidity	20%~95%, 40°C (noncondensing)

## Power

Power Supply	220W ATX power supply
--------------	-----------------------

## Operating System

Windows OS	Windows 2000/ Windows XP
Embedded OS	DOS, XPE, and Linux

## Test

Vibration	5-17Hz/1mm amplitude; 17-200Hz/1g peak-peak acceleration
Shock	10g peak-peak acceleration, 11ms period
EMC/EMI	GB9254-1998 class A

## Optional Accessories

Part Number	Name	Description	Qty.
2360-003671	AC power cable	L=1500/US standard/821	1
2192-006981	Driver CD (protective film)	PPC-1706/VER:A1	1

## Ordering Information

Part Number	Model Number	Description
0010-014610	PPC-1706-01	PPC-1706-01 with ETX-1841LDNA/EDB-ETX08/EDB-ETX08-EXT/160G/ Mobile AMD Sempron 2100+/ 1GB
0010-014620	PPC-1706T-01	PPC-1706T-01 ETX-1841LDNA/EDB-ETX08/EDB-ETX08-EXT/160G/Mobile AMD Sempron 2100+/1GB / touch screen